

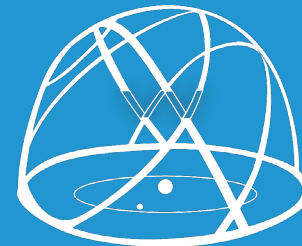
OPEN CALL: Reimagining the Learning Gallery



UNIVERSITY OF CAMBRIDGE
MUSEUMS
& BOTANIC GARDEN



Supported using public funding by
ARTS COUNCIL
ENGLAND



Whipple
Museum
of the History of Science

The Whipple Museum of the History of Science is reimagining our Learning Gallery!

We seek a creative practitioner with experience in community-focused installations to bring the “wow” factor to the Gallery, with an exciting and eye-catching new artwork to hang in the ceiling.

We’ve been consulting our young audiences about what they’d like to see in the Gallery: we’d like you to take inspiration from them, and from our collections, to create a work that inspires and invites reflection.

How you do it is up to you.

Fee: £2000 + £500 budget

Project development & delivery:
March & early April 2025

Deadline for expressions of interest: Sunday 26 January 2025



About the project

The Learning Gallery is the heart of the Whipple Museum, hosting 3,000 education visitors a year.

It's one of our hardest-working spaces, with school sessions or family activities happening nearly every day, as well as talks and seminars for grown-ups. When sessions aren't happening, visitors can get hands-on with our selection of handling objects and books.

We're making significant improvements to the Gallery, and completely refreshing the displays, to make it a more dynamic and family-friendly space. Over summer 2024, we consulted our younger visitors to find out what they'd like to see, too.

The Learning Gallery is part of a longer term plan to enhance our visitor offer and develop our audiences.





We are...

Installing new lights, painting the walls and ceiling, and installing plinths to protect large objects on display

Completely refreshing the displays so they align with the Whipple learning programme

Adding more interactive elements

Adding new furniture and a cosy corner with a sofa and sensory mat

Planning a creative installation in the ceiling...

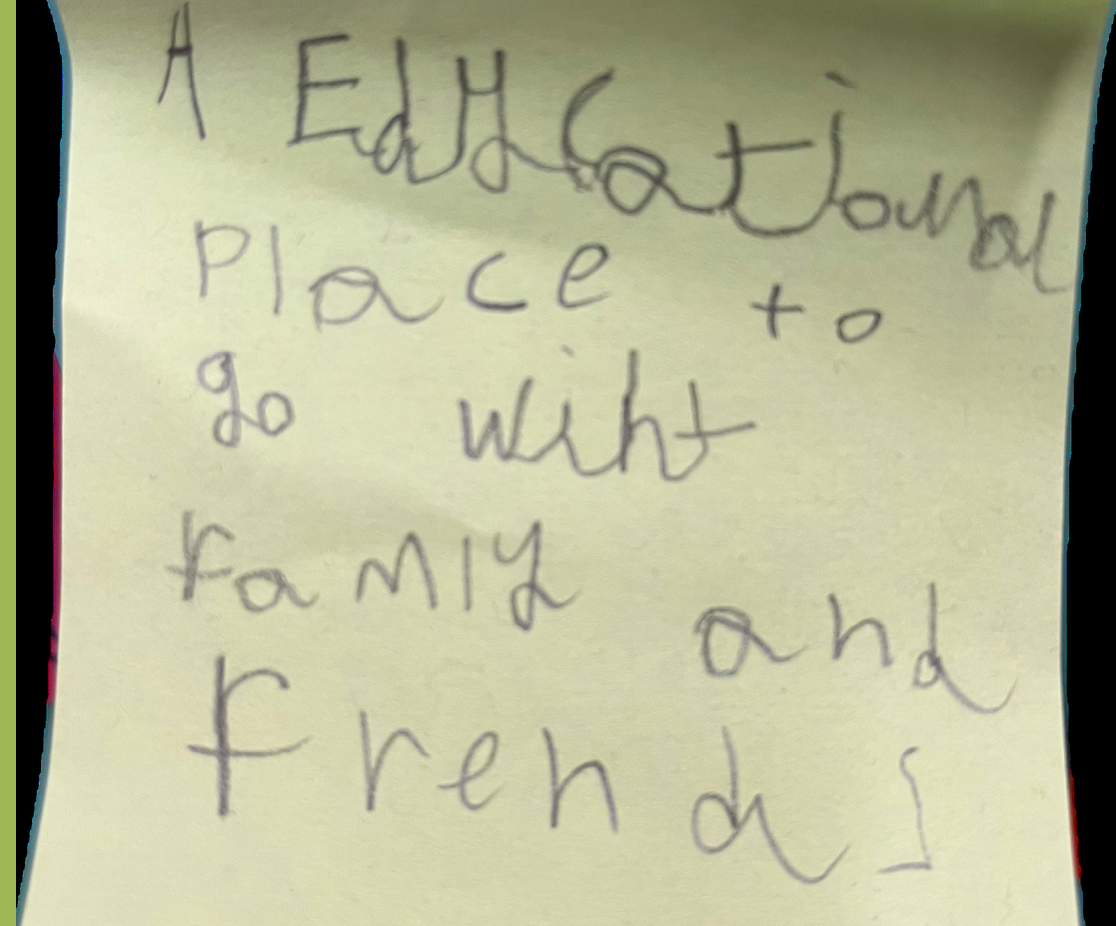
which is where you come in!

You will...

Deliver a Saturday workshop with families and young people, in partnership with the Whipple's Curator and Learning Coordinator, in March 2025

Take inspiration from the workshops, the Museum's collection, and from the summer consultation conducted by the Museum team

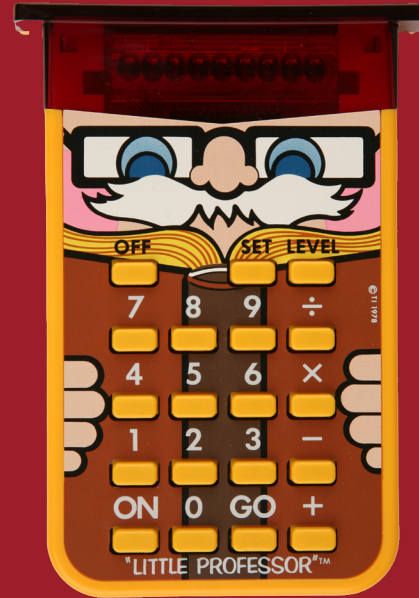
Create and install an eye-catching hanging installation in the Learning Gallery ceiling.



Fee: £2000

To cover 1-day workshop (8 hours) and 6 days of making and installation (48 hours).

Budget: up to £500 for production costs.



About you

You'll be passionate about science and be able to create work that inspires a sense of curiosity, wonder, and awe about the collection.

You'll have experience in working with museums or in community settings to create new work.

You'll have some experience in delivering creative workshops with children and families.

You might be an established practitioner, or you might be emerging.

The University of Cambridge Museums are committed to equity, diversity, inclusion, anti-racism and accessibility, and welcome applications from people of all backgrounds.

We expect that you will:

Be guided by the Museum team around the limitations of the space, in terms of the fabric of the room and our collections care requirements.

As far as possible, use sustainable materials to create the installation, with a mind to the longevity and end point of the work.

Assist with the evaluation of the process, with a commitment to reflective practice.

Ensure all Health & Safety requirements are adhered to.

Provide written confirmation that you are compliant with the Modern Slavery Act 2015.

Provide evidence of your right to work in the UK.

and you can expect that we will:

Work with you to achieve your creative ideas as far as we can within the space. (We will have a few limitations when it comes to the fabric of the room and ensuring our collections are safe – but we'll do our best.)

Provide you with full credit in the Learning Gallery and in our communications about the project.

Display the installation for at least 2 years.

Please note: we don't have a workshop or studio space, so the work will need to be created offsite and brought to the Whipple for installation. But don't let lack of your own studio space put you off: we can explore solutions such as covering a membership to shared workspace at Together Culture Cambridge.



Collections in Action

The project is funded by Arts Council England as part of the University of Cambridge Museums' Collections in Action programme.

As part of the programme, we've been exploring the themes Our Planet and Social Justice.

Our Planet focuses on environmental change, biodiversity loss, and unsustainable living. **Social Justice** explores place, power and identity within and beyond the collections.

We particularly welcome expressions of interest that engage with both or either of these themes.

About the Museum

The Whipple Museum's mission is to use our collections to share, challenge and explore stories from the history of science. Our internationally-important collections include the Herschel telescope (built by William Herschel, the discoverer of the planet Uranus), Charles Darwin's microscope, a fantastic and evocative array of globes and the country's largest public collection of handheld pocket calculators.

We're embedded in the academic community of the University of Cambridge's Department of the History & Philosophy Science, and work in partnership with our fellow University of Cambridge Museums and collections to develop our audiences and inspire a life-long engagement with science.



Apply Now!

The deadline for expressions of interest is

Sunday 26 January 2025 at midnight.

To express your interest, please contact the Curator, Hannah Price, with:

- A one-page CV or resume
- Three examples of your practice via online portfolio, annotated photographs or links
- A 300-word proposal outlining how you might approach the project.

We'll invite shortlisted candidates to an informal follow-up meeting to show you the space and give you the chance to meet the team in early February. We'll formally commission as soon as possible after that.

For any informal queries, please email Hannah on: hp280@cam.ac.uk.



More info

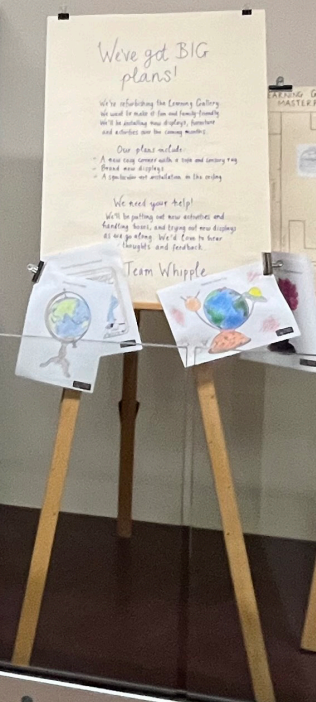
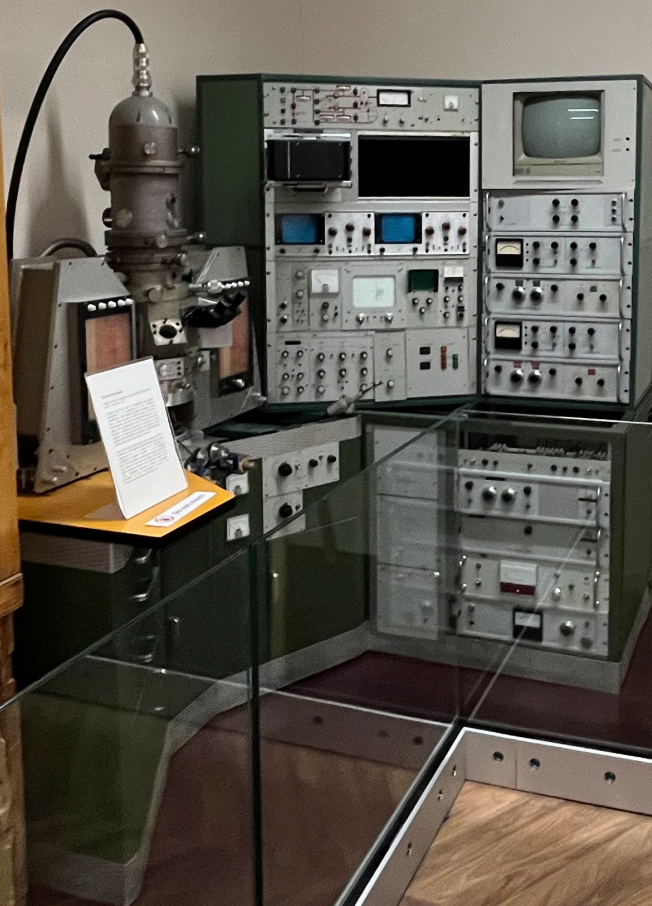
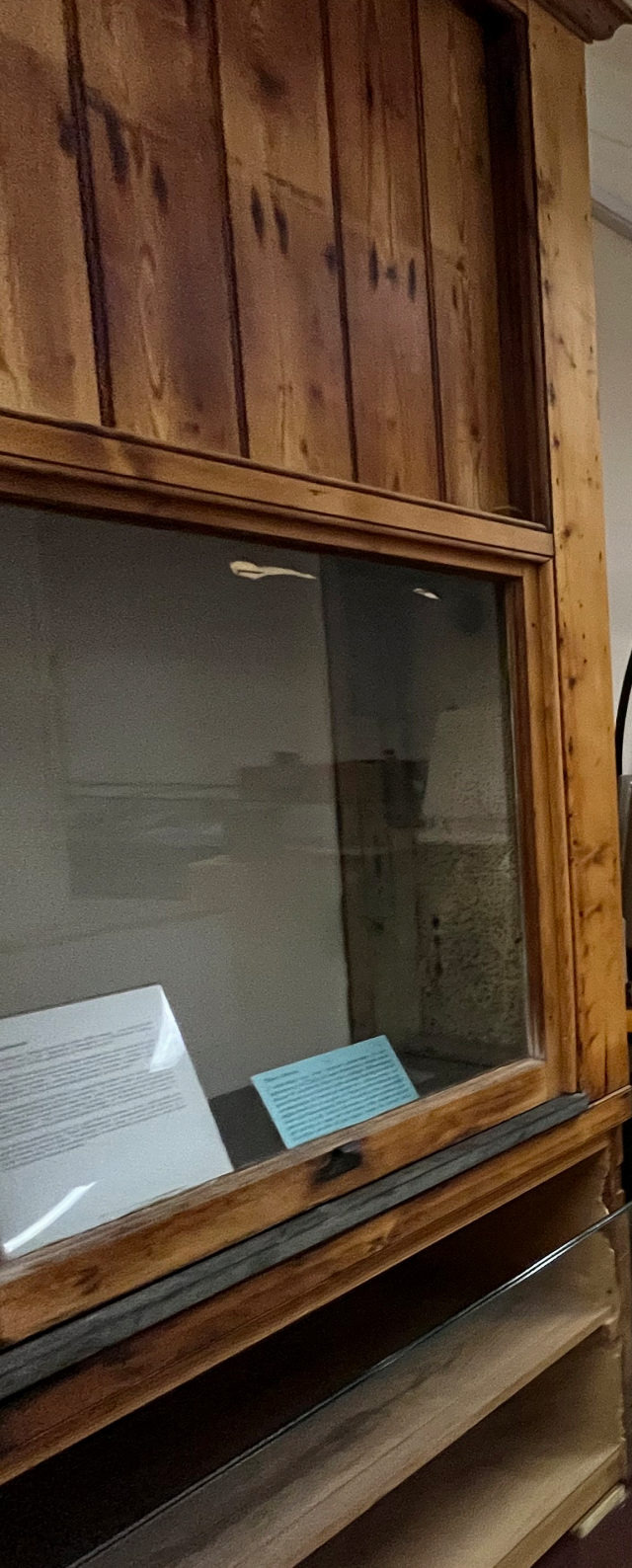
The Learning Gallery ceiling is, well, characterful, but not in the best way. It's a high ceiling with blacked-out clerestory windows and a tangle of old pipes. It's going to be painted a dark grey. Overall vibe is... institutional.

In other words, it's crying out for some creative inspiration to help make the Gallery a fun and family-friendly space. We know that for very young children, the ceiling is an important focal point.

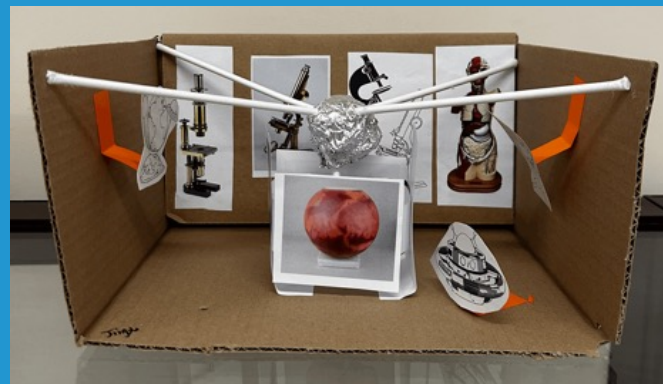
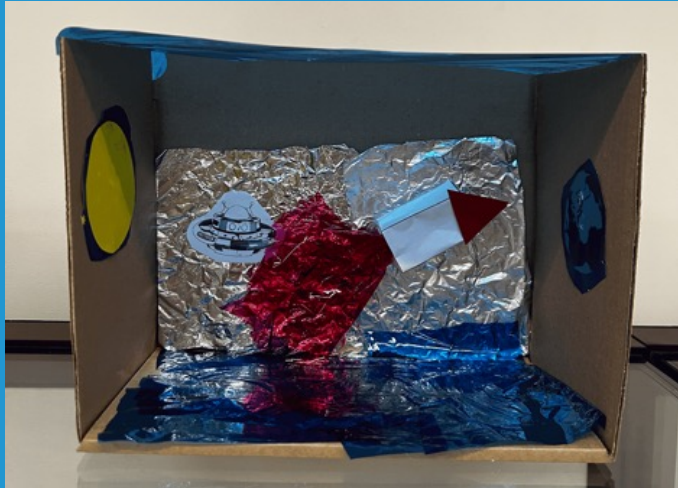
Initial ideas we've had:

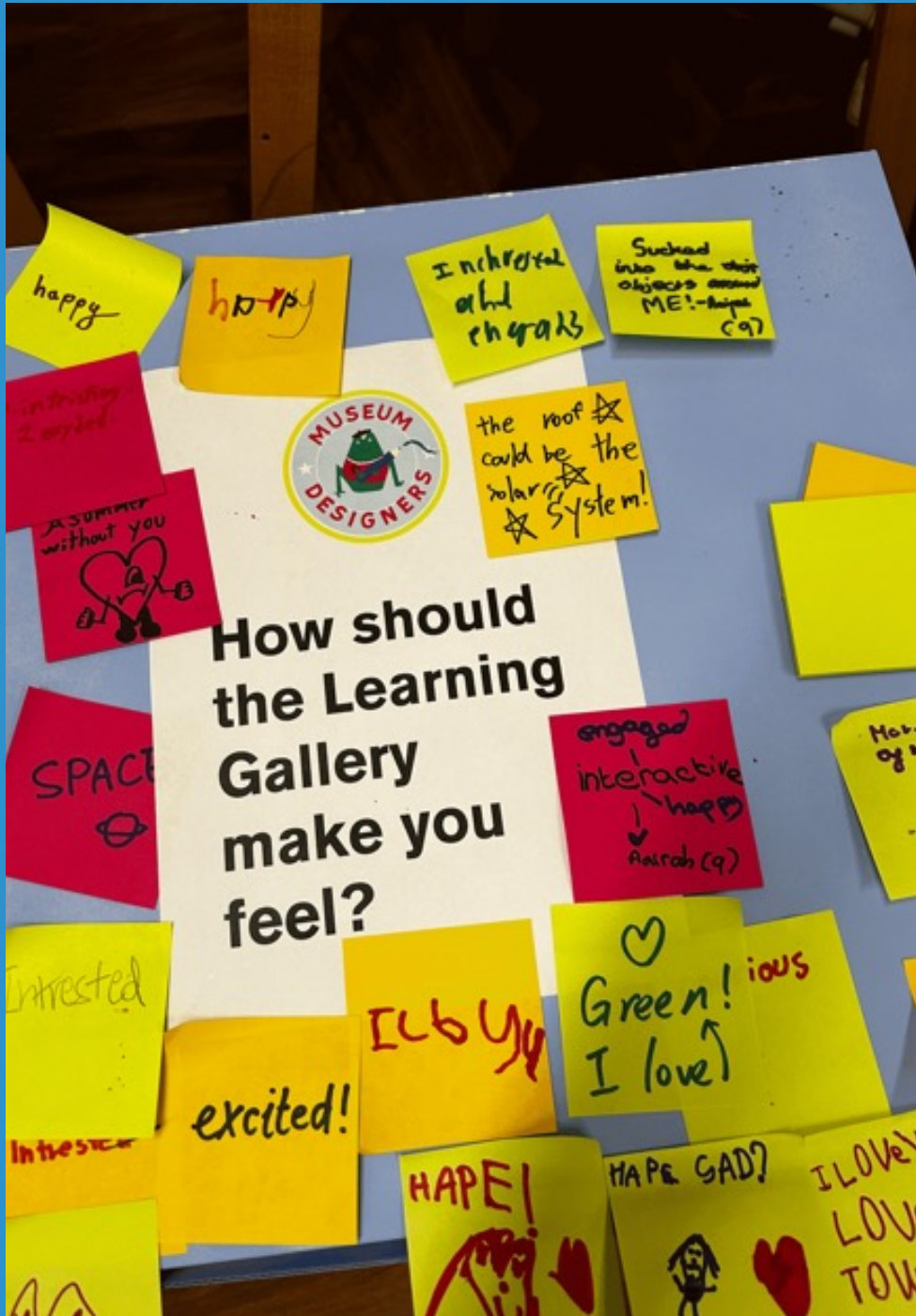
- Could we make a feature of the pipes? (Go the full Mario, or cover them with foil?)
- Could we hang something lightweight, or many light things in the open void, to lean into the different levels and layers the ceiling presents?





Our young visitors had amazing ideas of their own. We invited them to design their own Learning Galleries. Here are some of their creations...





comfy area
with projected
stars

the work
(earth)

the roof could be the
solar system!

I would like
to learn
about
telescope
I want more

SPACE

HAPE!